



In the beginning

MGD CVS 7-0-41 Form: VocAnnotModule (hjd, PROD_MGI, mgd)

File Commands Edit View Reports Utilities Help

Annotation Type: GO/Marker

MGI Accession ID: MGI:1097693 Object: Dgg1, 8-oxoguanine DNA-glycosylase 1, Chr 6

Term Acc ID	DAG	Vocabulary Term	NOT	J#	Citation	Evidence	Inferred From	Editor	Date	Notes
GO:0005739	C	mitochondrion	No	70393	de Souza-P.	IMP	MGI:2386943	hjd	10/1/2002	
GO:0005634	C	nucleus	No	58517	Klungland .	IMP	MGI:2386943	hjd	10/1/2002	
GO:0005634	C	nucleus	No	60000	Mouse Geno.	IEA		swissl.	6/25/2002	SP
GO:0004518	F	nuclease	No	60000	Mouse Geno.	IEA		swissl.	6/25/2002	SP
GO:0004519	F	endonuclease	No	60000	Mouse Geno.	IEA		swissl.	6/25/2002	SP
GO:0016798	F	hydrolase, acting on glyc.	No	60000	Mouse Geno.	IEA		swissl.	6/25/2002	SP
GO:0016829	F	lyase	No	60000	Mouse Geno.	IEA		swissl.	6/25/2002	SP
GO:0016787	F	hydrolase	No	60000	Mouse Geno.	IEA		swissl.	6/25/2002	SP
GO:0003824	F	enzyme	No	60000	Mouse Geno.	IEA		swissl.	6/25/2002	SP
GO:0008534	F	purine-specific oxidized .	No	58517	Klungland .	IMP	MGI:2386943	hjd	10/1/2002	
GO:0008534	F	purine-specific oxidized .	No	41749	Rosenquist.	IDA		hjd	10/1/2002	
GO:0006284	P	base-excision repair	No	58571	Freedman S.	IMP	MGI:2386943	hjd	10/1/2002	
GO:0006284	P	base-excision repair	No	41749	Rosenquist.	IDA		hjd	10/1/2002	
GO:0005975	P	carbohydrate metabolism	No	60000	Mouse Geno.	IEA		swissl.	6/25/2002	SP
GO:0006281	P	DNA repair	No	60000	Mouse Geno.	IEA		swissl.	6/25/2002	SP

Add Row Delete Row

J#	Citation
71458	Osterod M, Carcinogenesis 2001 Sep;22(9):1459-63
61902	Boiteux S, Arch Biochem Biophys 2000 May 1;377(1):1-8
61684	Minowa O, Proc Natl Acad Sci U S A 2000 Apr 11;97(8):4156-61
61448	Leatherman JL, Mech Dev 2000 Apr;92(2):145-53
53857	Boiteux S, Free Radic Res 1998 Dec;29(6):487-97
45415	Tani M, Mamm Genome 1998 Jan;9(1):32-7
41160	Lu R, Curr Biol 1997 Jun 1;7(6):397-407
40805	Aburatani H, Cancer Res 1997 Jun 1;57(11):2151-6

Search Clear Save

1 Search Results

Dgg1, 8-oxoguanine DNA-glycosylase 1, Chr 6

NOT No

Notes

11 Evidence Codes

IC
IDA
IEA
IEP
IGI

Annotation Type MGI Accession ID Marker
 Annotation Complete?

Reference Gene?

GO Marker Notes

Term Acc ID	DAG	Vocabulary Term	Qual	J:	Citation	Evi	Inferred From	Notes	Modified By	Date	Created By	Date
GO:0016020	C	membrane		60000	Mouse Geno.	IEA	SP_KW:KW-0472	gene product:Un	uniprotload	5/15/2011	uniprotloa	5/15/2011
GO:0005737	C	cytoplasm		169290	Gross A, J.	IDA		evidence: ↓	hjd	3/16/2011	hjd	3/10/2011
GO:0032592	C	integral to mitochondrial membrane		169290	Gross A, J.	IDA		evidence: ↓	hjd	3/14/2011	hjd	3/14/2011
GO:0005829	C	cytosol		155856	Mouse Geno.	ISO	NCBI:NP_073175	external ref:PM	RGD	10/30/2009	RGD	10/30/2009
GO:0005739	C	mitochondrion		155856	Mouse Geno.	ISO	NCBI:NP_073175	external ref:PM	RGD	10/30/2009	RGD	10/30/2009
GO:0005739	C	mitochondrion		151002	Pagliarini	IDA		protein product	hjd	9/23/2009	hjd	9/23/2009
GO:0005739	C	mitochondrion		70549	Zhao Y, J.	IDA		evidence: ↓	dph	12/29/2008	dph	12/29/2008
GO:0005829	C	cytosol		70549	Zhao Y, J.	IDA		evidence: ↓	dph	12/29/2008	dph	12/29/2008
GO:0005829	C	cytosol		76215	Putcha GV.	IDA		evidence:inferred	dmitrys	4/30/2008	dmitrys	4/30/2008
GO:0005829	C	cytosol		164563	Mouse Geno.	ISO	UniProtKB:P55957	external ref:PM	UniProtKB	4/27/2005	UniProtKB	4/27/2005
GO:0005741	C	mitochondrial outer membrane		164563	Mouse Geno.	ISO	UniProtKB:P55957	external ref:PM	UniProtKB	8/6/2004	UniProtKB	8/6/2004
GO:0005515	F	protein binding		116441	Certo M, C.	IPI	UniProtKB:Q92843		GOA_IntAct	5/3/2011	GOA_IntAct	5/3/2011
GO:0031625	F	ubiquitin protein ligase binding		163431	Azakar BA.	IPI	UniProtKB:Q96J02		GOA_UniProt.	6/7/2010	GOA_UniPro.	6/7/2010
GO:0005515							UniProtKB:Q81VG9		GOA_UniProt.	7/24/2006	GOA_UniPro.	7/24/2006
GO:009015							UniProtKB:P55957	external ref:PM	UniProtKB	3/17/2011	UniProtKB	3/17/2011

Notes Dialog

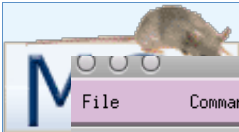
Notes

evidence:inferred from cell fractionation;ECO:0000004
 anatomy:sympathetic nervous system;MA:0000225
 cell type:neuron;CL:0000540|primary cell line cell;CL:0000001
 gene product:
 modification:
 target:
 external ref:
 text:

Save Changes

Cancel Changes

J#	Citation
171123	Kodama T, J Biol Chem 2011 Apr 22;286(16):13905-13
170848	Masson F, J Immunol 2011 Apr 1;186(7):4059-66
167307	Ren D, Science 2010 Dec 3;330(6009):1390-3
164154	McKenzie MD, Diabetes 2010 Mar;59(3):644-52
162998	Danthi P, PLoS Pathog 2010;6():e1000980
158994	Bradfute SB, J Immunol 2010 Jan 1;184(1):327-35
158799	Concannon CG, J Cell Biol 2010 Apr 5;189(1):83-94



File Commands Reports

Search Clear

Annotation Type MGI Accession ID Marker Annotation Complete? Reference Gene?

GO Marker Notes

Term Acc ID	DAG	Vocabulary Term	Qual	J:	Citation	Evi	Inferred From	Notes	Modified By	Date	Created By	Date
GO:0005829	C	cytosol		164563	Mouse Geno.	ISO	UniProtKB:P55957		UniProtKB	4/27/2005	UniProtKB	4/27/2005
GO:0005737	C	cytoplasm		169290	Gross A, J.	IDA			hjd	3/16/2011	hjd	3/10/2011
GO:0032592	C	integral to mitochondrial membrane		169290	Gross A, J.	IDA			hjd	3/14/2011	hjd	3/14/2011
GO:0005829	C	cytosol		155856	Mouse Geno.	ISO	NCBI:NP_073175		RGD	10/30/2009	RGD	10/30/2009
GO:0016020	C	membrane		60000	Mouse Geno.	IEA	SP_KW:KW-0472		uniprotload	5/17/2011	uniprotloa.	5/17/2011
GO:0005739	C	mitochondrion		151002	Pagliarini,	IDA			hjd	9/23/2009	hjd	9/23/2009
GO:0005739	C	mitochondrion		70549	Zhao Y, J.	IDA			dph	12/29/2008	dph	12/29/2008
GO:0005829	C	cytosol		70549	Zhao Y, J.	IDA			dph	12/29/2008	dph	12/29/2008
GO:0005829	C	cytosol		76215	Putchu GV,	IDA			dmitrys	4/30/2008	dmitrys	4/30/2008
GO:0005739	C	mitochondrion		155856	Mouse Geno.	ISO	NCBI:NP_073175		RGD	10/30/2009	RGD	10/30/2009

Add Row Delete Row Edit Term Search Obsolete Term Qualifier Evidence Code Notes Save Annotations

GO:0005829, J:76215

Stanza	Property	Value
1	evidence	inferred from cell fractionation;ECO:0000004
1	anatomy	sympathetic nervous system;MA:0000225
1	cell type	neuron;CL:0000540 primary cell line cell;CL:0000001

Evidence Property Add Row Delete Row Insert Row

- anatomy
- cell type
- dual-taxon ID
- evidence
- external ref
- gene product
- modification
- target
- text